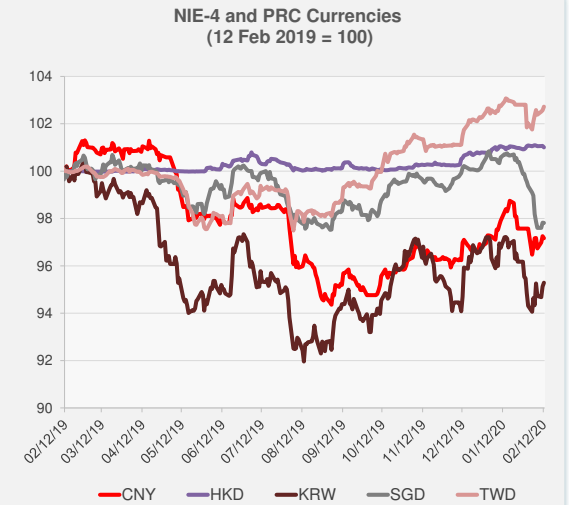
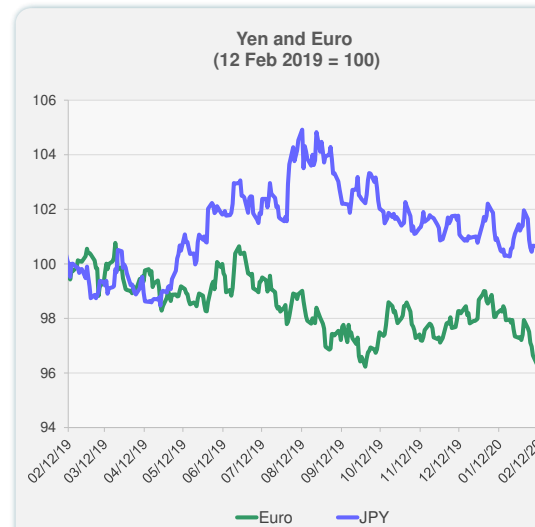
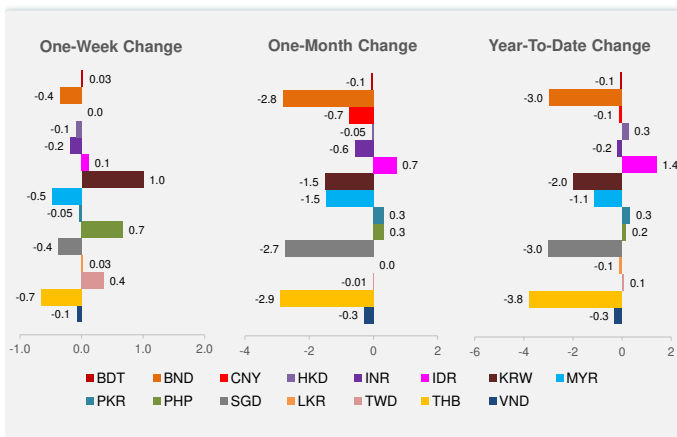
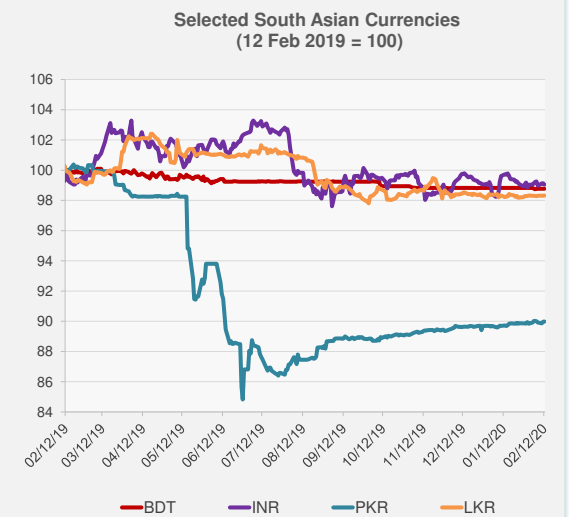
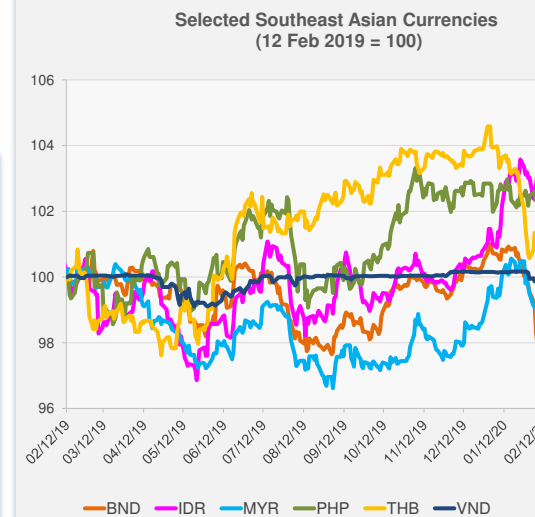


	Latest Closing	% change from Previous Day	% change from 01-Jan-20
Euro	0.92	-0.38	-3.01
Japanese yen (JPY)	110.09	-0.27	-1.21
Bangladeshi taka (BDT)	84.93	0.00	-0.06
Brunei dollar (BND)	1.39	0.00	-2.97
Chinese yuan (CNY)	6.97	-0.09	-0.12
Hong Kong dollar (HKD)	7.77	-0.06	0.26
Indian rupee (INR)	71.35	-0.09	-0.17
Indonesian rupiah (IDR)	13,674.00	0.01	1.40
Korean won (KRW)	1,179.55	0.17	-1.98
Malaysian ringgit (MYR)	4.14	-0.08	-1.11
Pakistan rupee (PKR)	154.40	0.00	0.32
Philippine peso (PHP)	50.57	0.26	0.16
Singapore dollar (SGD)	1.39	-0.01	-3.00
Sri Lanka rupee (LKR)	181.35	0.01	-0.10
Taipei,China NT dollar (TWD)	30.01	0.15	0.08
Thai baht (THB)	31.15	0.35	-3.78
Vietnamese dong (VND)	23,242.00	0.00	-0.30



NIE = Newly Industrialized Economies

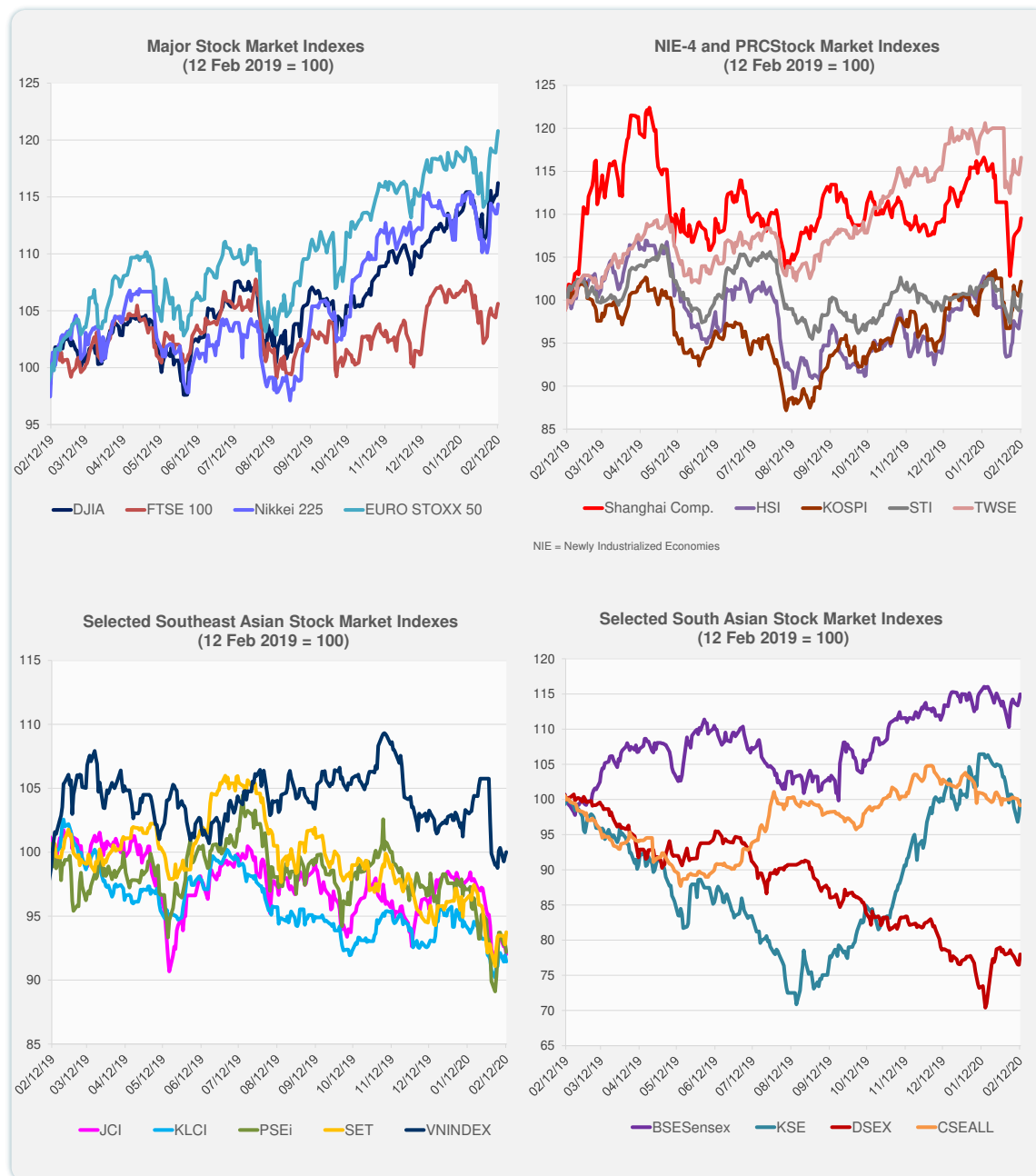
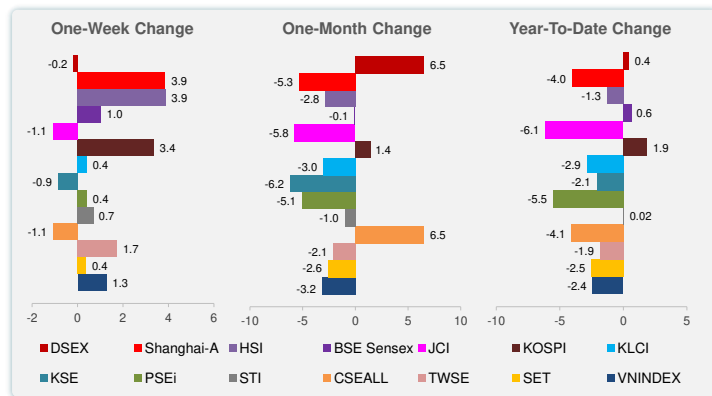


Note: Negative/Decreasing values indicate depreciation of local currency, and positive/increasing values indicate appreciation.
Source: Bloomberg.



Source: Bloomberg.

	Latest Closing	% change from Previous Day	% change from 01-Jan-20
US Dow Jones Ind Avg	29,551.42	0.94	3.55
US NASDAQ	9,725.96	0.90	8.40
US S&P 500	3,379.45	0.65	4.60
UK FTSE 100	7,534.37	0.47	-0.11
EURO STOXX 50	3,854.43	0.75	2.92
Japan NIKKEI 225	23,861.21	0.74	0.86
Bangladesh DSEX	4,471.51	1.96	0.42
PRC Shanghai Comp.	2,926.90	0.87	-4.04
Hong Kong, China HSI	27,823.66	0.87	-1.30
India BSE Sensex	41,565.90	0.85	0.63
Indonesia JCI	5,913.08	-0.69	-6.13
Korea, Rep. of KOSPI	2,238.38	0.69	1.85
Malaysia KLCI	1,542.94	-0.55	-2.88
Pakistan KSE 100	40,531.13	2.06	-2.10
Philippines PSEi	7,383.10	-0.76	-5.53
Singapore STI	3,223.37	1.51	0.02
Sri Lanka CSEALL	5,878.44	-0.35	-4.09
Taipei, China TWSE	11,774.19	0.94	-1.86
Thailand SET	1,539.84	1.04	-2.53
Viet Nam VNINDEX	937.68	0.32	-2.43



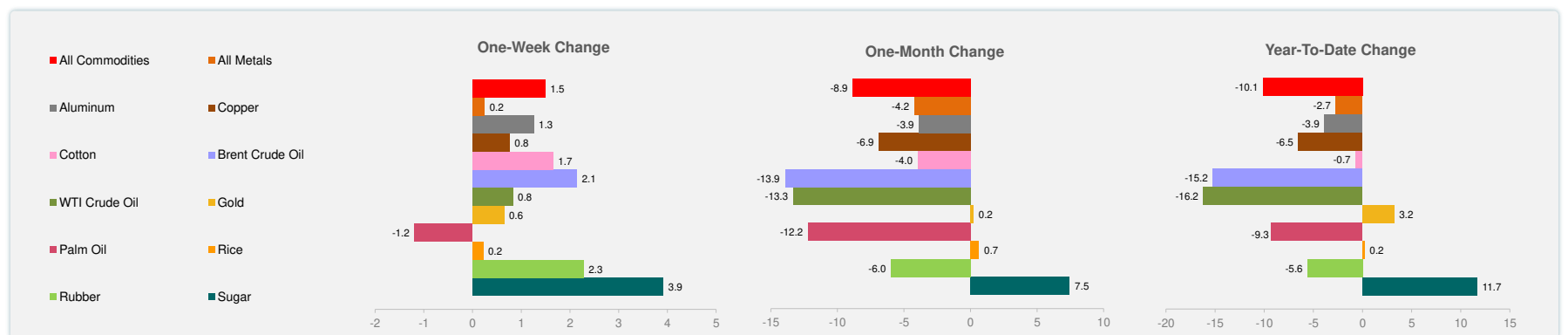
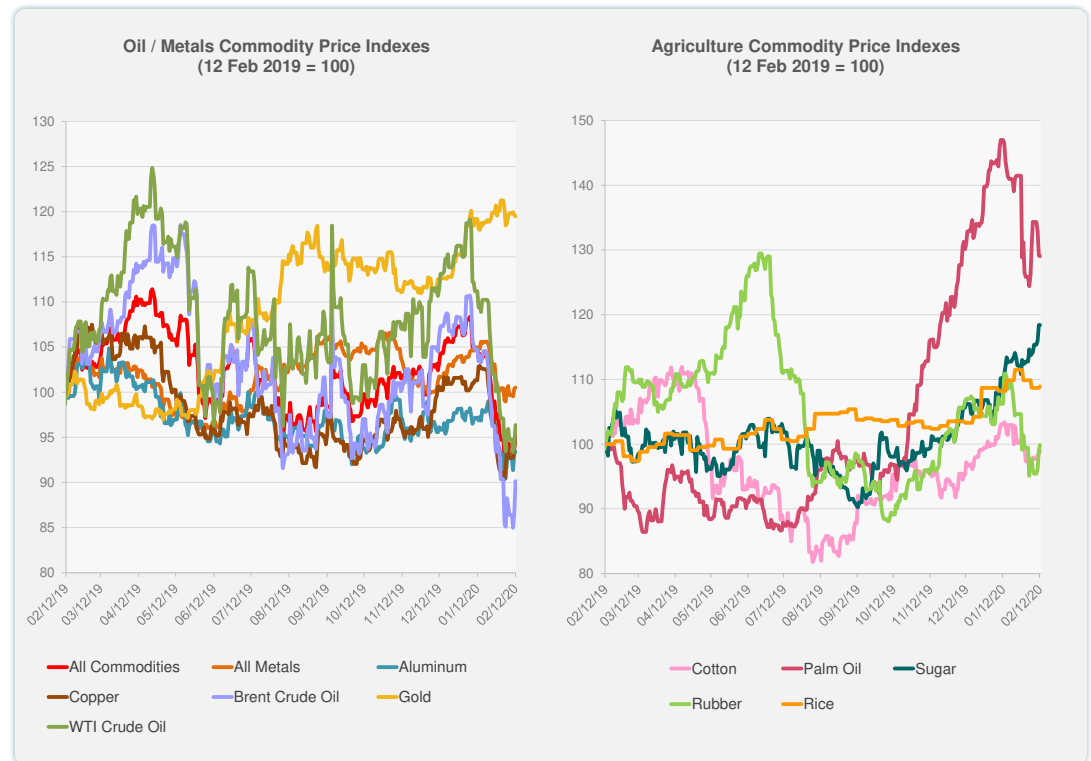
Source: Bloomberg.



Source: Bloomberg.

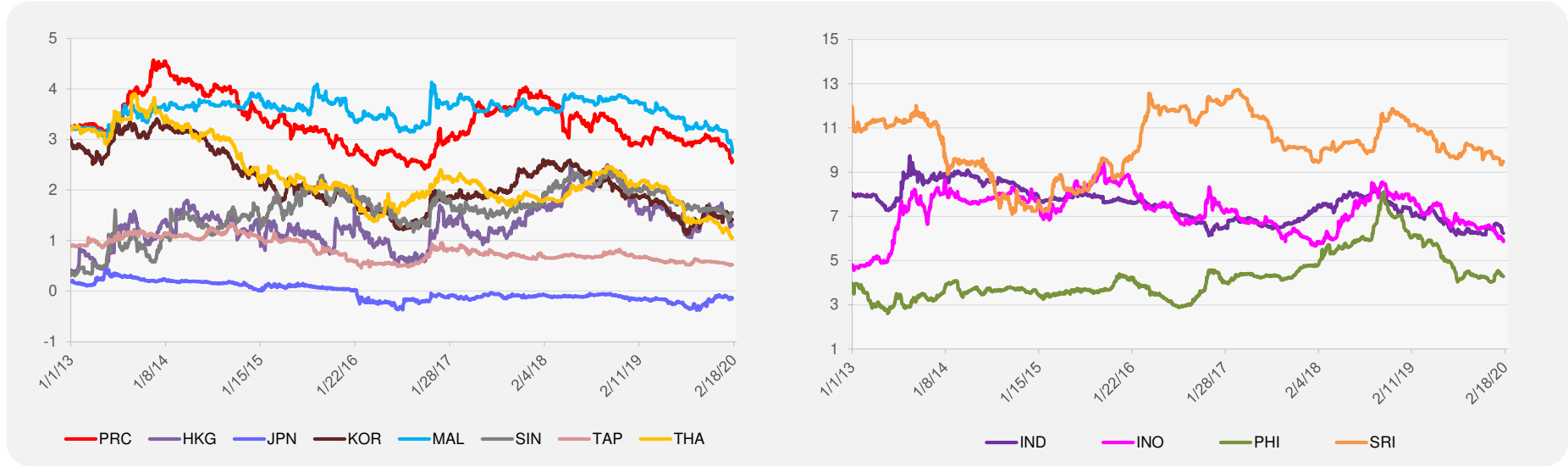
	Unit	Latest Closing	% change from Previous Day	% change from 01-Jan-20
S&P All Commodities	US\$	392.04	1.94	-10.13
S&P All Metals	US\$	211.59	0.12	-2.74
Aluminum	US\$/metric ton	1,711.75	0.15	-3.90
Copper	US\$/metric ton	5,747.00	0.31	-6.54
Cotton	US cents/lb	65.83	0.53	-0.71
Brent Crude Oil	US\$/barrel	56.20	4.02	-15.25
WTI Crude Oil	US\$/barrel	51.17	2.46	-16.20
Gold	US\$/troy oz	1,566.06	-0.12	3.21
Palm Oil	US\$/metric tonne	670.69	-0.08	-9.31
Rice ¹	US\$/metric ton	464.00	0.22	0.22
Rubber ²	US\$/kg	157.00	0.90	-5.59
Sugar	US cents/lb	15.12	0.00	11.67

¹ Latest closing price from 11 February 2020.
² Singapore Exchange, Ribbed Smoked Sheet Rubber.

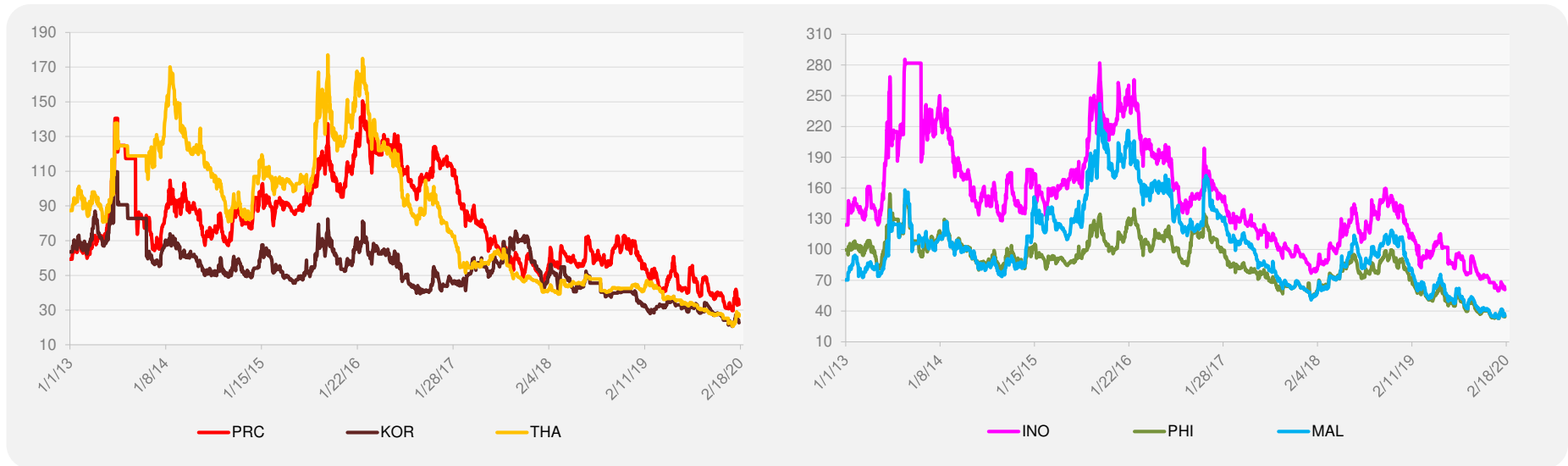


Source: Bloomberg.

5-YEAR LOCAL CURRENCY GOVERNMENT BOND YIELDS (%)



5-YEAR CREDIT DEFAULT SWAP¹



¹ In USD and based on sovereign bonds.
Source: Bloomberg.